



International Road Federation India Chapter

Email: india@irf.org.in
Web: www.indiairf.com

Our Mission – Better & Safer Roads, Safer INDIA.

Vision – A world of safe, sustainable, and efficient roads and road networks.

Values – Commitment to safe, smart & sustainable roads.

International Road Federation

India Chapter

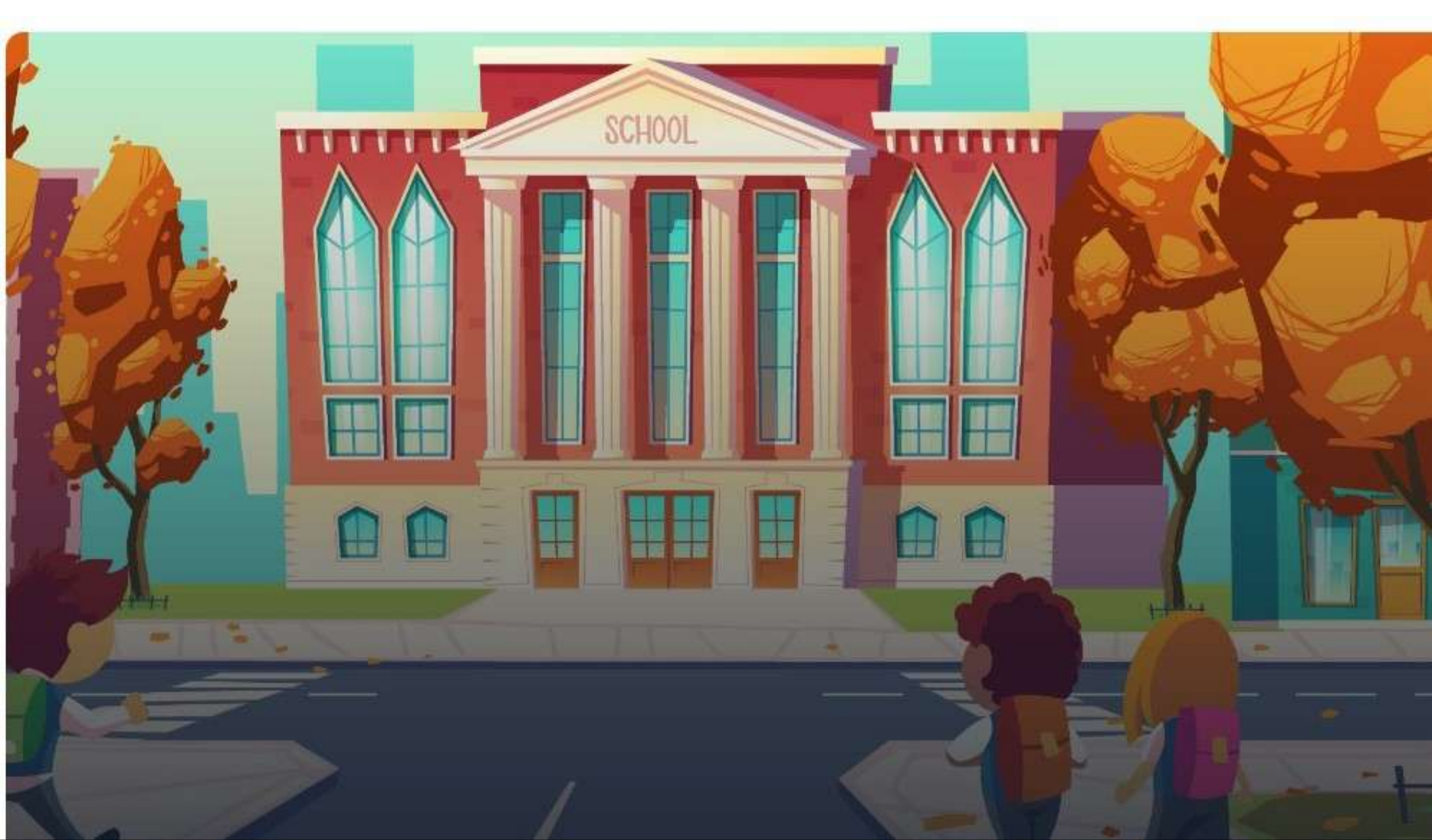
The International Road Federation (IRF) is a global, independent, not-for-profit organization active since 1948.



IRF-India Chapter was established in 2011, with HQ in New Delhi. Pursue the mission of "Safe Roads and Safe Road Mobility in India".

Some of our key Initiatives

- **Creating awareness** about Road Safety through Conferences, Seminars, and Lectures.
- Created a **Road Safety Anthem** in 23 Indian languages & 10 foreign languages.
- **Drafted Road Safety curriculum** for high school level incorporating Road Safety topics and imparting Education.
- **Capacity Building** through School Zone Safety Auditors Certification Course.
- **Undertaking School Zone Safety Program**
- **Enhancing First Aid (eFD) Programme** for Commercial Drivers & Bystanders.
- **Increasing visibility of Bicyclists** and Tractors/Trolleys through affixing **retro-reflective tapes**.
- **Web-based Road Accident** Data collection for comprehensive accident analysis.
- **Giving Road Safety Awards** for the best State and Union Territory.
- **5E Program** in many States.



IRF IC School Zone Safety Program



Introduction

- Road Safety in India: A serious challenge!
- Over 165,000 annual road fatalities, 22% of global crashes.
- School Zones contribute nearly 10% of fatalities.
- One child dies every 45 minutes.
- 38% of children (0-14 years) and 64% (14-18 years) affected
- Increase in fatalities of school children: 6.4% (2017) to 7.6% (2022)

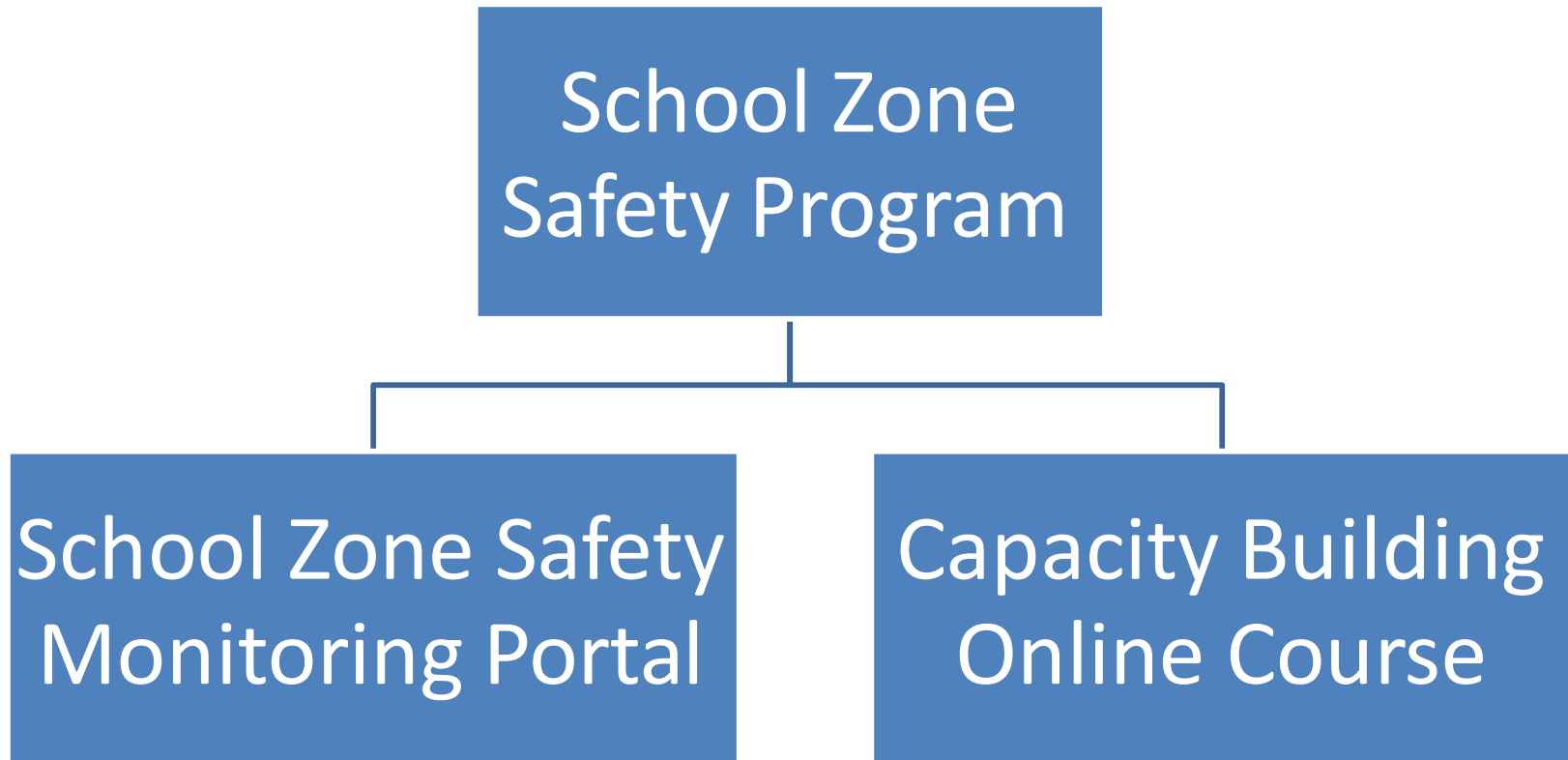
School Zone Safety Program objective

- Ensure student safety in the school zone roads.
- IRC SP- 32 guidelines lays down standards for school zone safety.
- Monitoring vulnerability of school zone safety by **conducting a School Zone Safety Audit** to see IRC SP-32 guidelines followed and bring it into the public domain so that pressure can be exerted by parents, and citizens on School and civil administration for rectification of shortcomings.
- Key parameters: Road Markings, Traffic Signages, Pedestrian Crossings, Speed-calming measures, Bus stops, and Footpaths.



IRF (IC) launched the **School Zone Safety Program.**

School Zone Safety Program overview



School Zone Safety Program Goal

- Creating Awareness in society and policymakers about school zone road safety.
- Ranking schools based on adherence to safety standards to enhance positive competition.
- Involving private participation in adopting schools and helping with their CSR funding for:
 - Auditing and reporting on SZMP
 - Rectifications of shortcomings to ensure complete safety of the school zone as per IRC SP – 32.
- The ultimate aim is to improve school zone safety, save every child, and foster responsible citizenship.

School Zone Safety Portal –Visibility & Awareness

- SZS Portal for public visibility
- Parents/citizens can assess school safety
- Unique login for each school for easy access
- <https://safeschoolzone.indiairf.com/login>



The screenshot shows the 'Safe School Zone' login portal. At the top left is the logo, which includes a yellow shield with a black silhouette of a person walking, followed by the text 'Safe School Zone' and 'International Road Federation' below it. The main heading is 'Login to Portal'. Below this are two input fields: 'Email' with the placeholder 'etu@ymal.com' and 'Password' with a masked password '*****'. A green 'Login' button is positioned below the password field. At the bottom, there is a link that says 'Don't have a user account? Sign up here'.



Information about School

I		Information on School's Infrastructure on safe transportation, parking, marshals, patrol team etc.									
Sl.No.	Questions	Options									
1	Name of school										
2	Type of School	Government			Aided				Private		
3	Level of Education	Up to 4th Class		Up to 7th Class		Up to 10th Class			Up to 12th Class		
4	Address of School										
5	School Co-ordinates (Latitude/Longitude)										
6	Radius of School Zone treated	≤100	100-150	150-200	200-250	250-300	300-350	350-400	400-450	450-500	≥ 500
		Reference Table: Radius for School Proximal Zone									
		Urban Roads / Interurban Roads				Primary (meters)		Secondary (meters)		Senior Secondary (meters)	
		Arterial Roads / Highways				400		450		500	
		Sub Arterial Roads / Major District Roads				300		350		400	
		Collector Street / Other District Roads				200		250		300	
Local Streets / Other Roads (including PMGSY Roads)				150		200		250			
Source: IRC SP 32 Guidelines for safe commute to school (Draft)											
7	Number of Students	≤ 500	500 - 1000	1000 - 2000	2000 - 3000	3000 - 4000	3000 - 4000		> 4000		
8	Number of Staff	≤ 50*	50 - 100	100 - 150	150 - 250	250 - 500	250 - 500		>500		

Info. about School's Infrastructure

I Information on School's Infrastructure on safe transportation, parking, marshals, patrol team etc.									
Sl.No.	Questions	Options							
9	What is the preferred mode of commuting of students to school? Choose the most relevant three modes in order.	Walk	Cycle	Car	Two-Wheeler	School Bus / Van	Public Transport	Other	
10	Does the school provide information with respect to opening/closing timings for different wings outside the school gate?	Yes				No			
11	Does the school provide safe transportation to the students and staff? (ex. School bus / van / other mode)	Yes				No			
12	Does the school provide parking facility for the staff and school buses?	Inside School Compound		Outside School Compound		Both		None	
		*Subject to type of school and road hierarchy							
13	Is a dedicated and demarcated pick up and drop off zone for school bus provided inside / adjacent to school?	Yes				No			
14	Does the school provide parent pick up and drop off location?	Inside School Compound		Outside School Compound		Both		None	
15	Does the school provide special event related information?	Yes				No			
16	Does the school provide multiple Entry / Exit to school?	Yes				No			
17	Is the school in regular contact with local authorities for the installation of traffic calming measures around the school?	Yes				No			
18	Does the school have a road safety patrol team?	Yes				No			
19	Is marshal / lollipop man deployed during school opening and closing hours with safety gears and Stop Sign?	Yes				No			

Info. About School's Infrastructure on Safe Transportation

II		Questions on traffic characteristics, road geometry and road safety infrastructure on road.							
Sl.No.	Questions	Options							
1	Volume to Capacity ratio of traffic outside the school?	≤0.7	0.7 - 0.8	0.8 - 0.9	0.9 - 1	>1			
2	Pedestrian traffic per hour	≤500	500-1000	1000 - 2000	2000-3000	3000-4000	4000-5000	>5000	
		Reference Table: Capacity of Pedestrian Zone (in Footpath)							
		Sl.No:	Width of Pedestrian Zone (m)	Design Flow in number of persons per hour					
				In Both Direction		All in One Direction			
				LOS B	LOS C	LOS B	LOS C		
		1	1.8	1350	1890	2025	2835		
		2	2.0	1800	2520	2700	3780		
3	2.5	2250	3150	3375	4725				
4	3.0	2700	3780	4050	5670				
5	3.5	3150	4410	4725	6615				
6	4.0	3600	5040	5400	7560				
Source: IRC 86-2018: Geometric Design Standards for Urban Roads and Streets.									
3	Presence of Cycle Traffic per hour	≤50	50-100	100-200	200 - 300	>300			
		Reference Table: Capacity of Cycle Tracks							
		Width of Cycle Track	Capacity in Number of Cycles/Hour						
			One Way Traffic		Two Way Traffic				
	2 lanes (3m)	250 – 600		50 – 250					
	3 lanes (4.5m)	Over 600		250 – 600					
	4 lanes (6.0m)	-----		Over 600					
Source: IRC 86-2018: Geometric Design Standards for Urban Roads and Streets.									
4	Overall condition of the road surface	Excellent	Good	Average (Needs Resurfacing)		Poor (Needs pothole repair)			
5	Category of road in the School Access Zone (SAZ)	Arterial Road	Sub-arterial road	Collector street	Local street	Urban Expressway	Service Road	National Highway	State Highway

Info about Traffic Characteristics

II Questions on traffic characteristics, road geometry and road safety infrastructure on road.									
Sl.No.	Questions	Options							
5 a	Type of road in SAZ	Undivided				Divided			
5 b	Lane configuration per approach arm in SAZ	1	2		3		4		
6	Category of road in the School Proximal Zone (SPZ)	Arterial Road	Sub-arterial road	Collector street	Local street	Urban Expressway	Service Road	National Highway	State Highway
6 a	Type of road in SPZ	Undivided				Divided			
6 b	Lane configuration per approach arm in SPZ	1	2		3		4		
7	Does the school have direct access to the nearest intersection within 100m?	Yes				No			
	If yes, then:								
7 a	Number of Intersection in the school zone	1	2		3		>3		
7 b	Type of Intersection	Three Arm	Four Arm	Skewed Intersection	Roundabout	More than four arm intersection	Merging / Diverging Section	Other	
7 c	Is the intersections signalized?	Yes				No			
7 d	Number of signalized intersections in the school zone	1	2		3		>3		
7 e	Does the traffic signal function properly?	1	2		3		4		5
		Rating Parameters (Drop down menu)							Rating
		> 15 sec green time for pedestrian crossing	No conflict between pedestrian and vehicular traffic		Is the signal visible from 200 m		5		
		10- 15 sec green time for pedestrian crossing	Few conflicts between pedestrian and vehicular traffic		Is the signal visible from 200 - 150 m		4		
		5 - 10 sec green time for pedestrian crossing	Moderate conflict between pedestrian and vehicular traffic		Is the signal visible from 150m - 100 m		3		
		< 5 sec green time for pedestrian crossing	Conflict between Pedestrian and Vehicular Traffic		Is the signal visible from <100 m		2		
No separate pedestrian phase time.	Crash between Pedestrian and Vehicular Traffic		Not visible properly		1				

Info about Road Geometry

II Questions on traffic characteristics, road geometry and road safety infrastructure on road.							
Sl.No.	Questions	Options					
8	Is the school situated where all the roads leading to school provides good visibility to the school and to the movement of non-motorized traffic?	Good	Partially		Not Visible		
9	Is speed breaker / trapezoidal speed hump / rumble strip / TBM or any other physical parameters provided on the carriageway for reducing the speed of the vehicles.	Yes			No		
If yes, then:							
9 a	Specify the traffic calming measures on all the arms of the school zone	Speed Breaker	Trapezoidal Speed Hump	Rumble Strip	TBM	Other	
9 b	Is the traffic calming measure working effectively in reducing the speed of the motorized vehicle?	1	2	3	4	5	
		Rating Parameters (Drop down menu)					Rating
		Sufficient width of the traffic calming measure as per standards are provided					5
		Different textured surface other than bitumen or concrete surface					5
		Highlighted with transverse road marking and road studs					5
		Presence of the traffic calming measure supplemented with traffic signs and longitudinal road marking					5
		Different textured surface is not provided					3
		Transverse road marking is provided but road studs are not provided to highlight the presence of vertical deflection on road.					3
		Width of the traffic calming measure is not sufficient					2
		Not provided with longitudinal road marking and traffic signs					2
Transverse road marking and road studs are not provided to highlight the presence of vertical deflection on road.					1		
10	Is horizontal deflection provided for speed calming for Motorized traffic on all the arms of the school zone	Yes			No		
If yes, then:							
10 a	The type of horizontal deflection provided	Extension of kerb	Chicane	Lane Narrowing using road marking	Other (Rate as per effectiveness)		

Info about Safe Infrastructure on Road

II Questions on traffic characteristics, road geometry and road safety infrastructure on road.						
Sl.No.	Questions	Options				
10 b	Is horizontal deflection working effectively in reducing the speed of the motorized vehicle?	1	2	3	4	5
		Note: Speed of the motorized vehicles shall be reduced with the application of horizontal deflection. Depending on the effectiveness of the traffic calming measure, rating needs to be decided by the auditor.				
11	Is SCHOOL AHEAD / SCHOOL ZONE cautionary signs provided at the start of the school zone and at frequent interval to warn the road user about the presence of school.	Yes			No	
	If yes, then:					
11 a	Number of "School Ahead" cautionary signs present on the approach roads leading to the school.	1	2	3	>3	
		Note: Cautionary sign on School Ahead/School Zone shall be provided at 1. Start of the Transition Zone. 2. Start of the SPZ and end of Transition Zone 3. Start of the SAZ and end of SPZ				
11 b	Shape of the cautionary sign near school zone.	Triangle	Rectangle	Circle	Other	
		Note: Cautionary sign shall be of equilateral triangular shape.				
11 c	Colour of the School Ahead / School Zone cautionary sign near school zone.	White	Yellow	Green	Blue	Fluorescent Yellow Green
		Note: Colour of School Zone/School Ahead cautionary signs shall be Fluorescent Yellow.				
12	Is STOP sign provided at the side road / minor road where vehicle need to stop before entering the school zone lane.	Yes			No	
13	Operating speed of traffic in school zone during school start and dispersal time.	<=20kmph	20 - 30 kmph	30 - 50 kmph	50-65 kmph	65 - 80 kmph
		Note: Operating speed is the actual speed the vehicles is moving on this carriageway. Since it is a school zone, vehicular speed shall not be more than 30kmph. This will help to understand the traffic calming measures at this location to reduce the speed.				

Cont.

II Questions on traffic characteristics, road geometry and road safety infrastructure on road.				
Sl.No.	Questions	Options		
14	Is the SPEED LIMIT sign provided to regulate the vehicular speeds on the school zone.	Yes	No	
	If yes, then:			
		1	2	3
14 a	Number of SPEED LIMIT regulatory signs present on roads leading to school.	Note: Regulatory sign on Speed Limit shall be provided at: 1. Start of the Transition Zone. 2. Start of the SPZ and end of Transition Zone 3. Start of the SAZ and end of SPZ		
		<=20kmph	20 - 30 kmph	30 - 50 kmph
		Reference Table: Speed Limit on School Zone		
		Urban Roads / Interurban Roads	Prescribed Speed Limit in SPZ (kmph)	Prescribed Speed Limit in SAZ (kmph)
		Arterial Roads / Highways	30	25
		Sub Arterial Roads / Major District Roads	30	25
		Collector Street / Other District Roads	30	25
		Local Streets / Other Roads (including PMGSY Roads)	20	20
		Preferred method for enforcing speed limits		
		Time specific Speed Limit		
		Time specific Speed Limit		
		Fixed Speed Limit throughout		
		Fixed Speed Limit throughout		
		Source: Source: IRC SP 32 Guidelines for safe commute to school (Draft)		
14 b	What is the speed displayed on the SPEED LIMIT sign?			
14 c	Is the SPEED LIMIT road marking present on approach roads leading to school.	Yes	No	

Cont.

II Questions on traffic characteristics, road geometry and road safety infrastructure on road.				
Sl.No.	Questions	Options		
14 d	Does the location have speed limit sign on yellow backing board emphasizing the need for lower speed limit on the approach roads leading to school.	Yes	No	Not Required
		Note: To improve conspicuity against a complex or dark background, a sign may be mounted on a yellow backing board. They should be used very sparingly as a special case and not as a matter of routine. It may also be fluorescent; this greatly increases conspicuity in dull weather and at dusk. Fluorescence can be particularly effective in drawing attention to signs mounted in deep shadow, e.g. below overhanging trees or in places affected by dull or foggy weather conditions.		
15	Is the pick-up and drop-off zone highlighted with road marking and traffic signs.	Yes	No	No
15 a	Is the dedicated pick-up and drop-off zone used by the parents.	Yes	No	No
16	Is the parking space highlighted with road marking and traffic signs.	Yes	No	No
17	Does the school prevent parking immediately outside the school gate?	Yes	No	No
	If yes, then:			
17 a	Is the no parking location highlighted with road marking and traffic signs.	Yes	No	No
18	Is Bus Stop present within the school zone?	Yes	No	No
	If yes, then:			
18 a	Is the bus stop highlighted with proper road marking and traffic signs?	Yes	No	No
19	Is pedestrian footpath provided on SAZ	Yes	No	No
20	Is pedestrian footpath provided on SPZ	Yes	No	No
21	Is footpath on the raised level than carriageway on SAZ?	Yes	No	No

Cont.

II Questions on traffic characteristics, road geometry and road safety infrastructure on road.			
Sl.No.	Questions	Options	
22	Is footpath on the raised level than carriageway on the SPZ?	Yes	No
23	Is the width of the sidewalk sufficient for the peak pedestrian flow?	Sufficient	Moderately Sufficient
		Not Sufficient	
Note: This question is related to question number 2 of this section. Capacity and width of footpath. Width of the sidewalk shall also be judged based on the encroachment by hawkers and vendors, transformers, trees or any other objects which is not allowing a seamless pedestrian travel path.			
24	Is it possible to have seamless journey on the footpath without hinderance from hawkers / vendors / streetlights / signposts / transformers / trees and any other physical objects.	Yes	Moderately
25	Is Pedestrian Guard Rail / bollards provided segregating the motorized and non-motorized traffic?	Yes	Moderately
26	Is the sidewalk properly maintained including the pedestrian guard rail?	Yes	No
27	Are there pedestrians crossing at mid-block section or at unsignalized intersection?	Yes	No
If yes, is the following pedestrian crossing facilities present at the location;			
27 a	Pedestrian activated traffic signal or Pelican crossing	Yes	No
27 b	Zebra crossing marking	Yes	No
27 c	Pedestrian Crossing signages	Yes	No
27 d	Different colored or different textured pedestrian crossing facility at the school zone.	Yes	No
27 e	Pedestrian refuge island	Yes	No
28	Is Cycle track / Cycle Lane present in school zone area?	Yes	No
If yes, then:			

Cont.

II Questions on traffic characteristics, road geometry and road safety infrastructure on road.							
Sl.No.	Questions	Options					
28 a	Is sufficient road marking and traffic signs provided for cycle track?	Yes		No			
28 b	Does the school zone contain cycle route ahead sign board?	Yes		No			
28 c	Is proper lane segregation provided for cycle lane using tubular marker, traffic signs and road marking?	Yes		No			
29	Rate the presence of traffic signs from 1 to 5, 1 being the lowest and 5 being the highest based on the usefulness, legibility and message provided by the traffic signages.	1	2	3	4	5	
		Rating Parameters (Drop down menu)					Rating
		Legible (signage shall be clear enough to read)					5
		Conspicuous (signage shall be clearly visible)					5
		Reflective (reflectivity value of signage shall be as recommended in IRC 67:2022)					5
		Symbols/Icons and font as per IRC 67:2022 guideline					5
		Shape and Color is as prescribed in IRC 67:2022 guideline					5
		100 % compliance of number traffic signs on School Zone					5
		Semi – Conspicuous					4
		Semi – Reflective					4
		80% - 100 % compliance of number traffic signs on School Zone					4
		Semi – Legible					3
		Symbols/Icons and fonts are not exactly as per IRC guidelines but similar.					3
		Shape and Color is not exactly as per IRC guidelines but similar.					3
		60% - 80 % compliance of number traffic signs on School Zone					3
		Not Legible					2
		Not Conspicuous					2
		Non-Reflective					2
		Symbols/Icons and fonts are not as per IRC guidelines					2
		Shape and Color is not as per IRC guidelines					2
40% - 60% compliance of number traffic signs on School Zone					2		
Painted signages					1		
<40% compliance of number traffic signs on School Zone					1		

Cont.

II Questions on traffic characteristics, road geometry and road safety infrastructure on road.						
Sl.No.	Questions	Options				
		1	2	3	4	5
30	Rate the presence of road marking from 5 to 1, 5 being the highest and 1 being the lowest based on the usefulness and message provided by the road marking.	Rating Parameters (Drop down menu)				Rating
		Conspicuous				5
		Width and Length as per IRC guidelines				5
		Warning markings are provided near the SAZ				5
		Road marking such as zebra crossing, marking on speed breaker, trapezoidal hump, graphic marking on pedestrian waiting area on footpath etc. are provided.				5
		Percentage of road marking remaining intact is 100%				5
		Road marking such as zebra crossing, marking on speed breaker, trapezoidal hump etc. are provided.				4
		Semi - Conspicuous				4
		Percentage of road marking remaining intact is 90% - 100%				4
		Warning markings are not provided near the SAZ				3
		Road marking such as zebra crossing, marking on speed breaker, trapezoidal hump etc. are provided but faded.				3
		Percentage of road marking remaining intact is 80% - 90%				3
		Not Conspicuous				2
		Width and Length are not as per IRC guidelines				2
		Percentage of road marking remaining intact is 70% - 80%				2
		Road marking such as zebra crossing, marking on speed breaker, trapezoidal hump etc. are not provided.				1
Percentage of road marking remaining intact < 70%				1		
31	Rate the presence of road stud from 1 to 5, 1 being the lowest and 5 being the highest; based on the usefulness, reflectivity, and application area.	1	2	3	4	5
		Rating Parameters (Drop down menu)				Rating
		Provided on longitudinal marking following spacing as per IRC guidelines.				5
		Provided for vertical deflection such as speed breakers, rumble strip, trapezoidal hump etc.				5
		Provided for pedestrian crossing.				5
Provided for other road marking such as STOP line, Give Way line etc.				5		

Cont.

II Questions on traffic characteristics, road geometry and road safety infrastructure on road.																																									
Sl.No.	Questions	Options																																							
		Percentage of studs and reflective area remaining intact is 100%			5																																				
		Partially provided for vertical deflection			4																																				
		Percentage of studs and reflective area remaining intact is 90 - 100%			4																																				
		Provided on longitudinal marking not in compliance with IRC guideline.			3																																				
		Not provided for vertical deflection			3																																				
		Not provided for other road marking such as STOP line, Give Way line etc.			3																																				
		Percentage of studs and reflective area remaining intact is 80% - 90%			3																																				
		Not provided for pedestrian crossing.			2																																				
		Percentage of studs and reflective area remaining intact is 70% - 80%			2																																				
		Not provided on the school zone			1																																				
		Percentage of studs and reflective area remaining intact is < 70%			1																																				
32	Are other road furniture present on the road	Yes	No	Not Required																																					
	If yes, then rate the presence of the item																																								
		1	2	3	4	5																																			
32 a	Median Marker	<table border="1"> <thead> <tr> <th colspan="2">Rating Parameters (Drop down menu)</th> <th>Rating</th> </tr> </thead> <tbody> <tr> <td colspan="2">Median marker provided on the medians at equal to or less than 5 m spacing</td> <td>5</td> </tr> <tr> <td colspan="2">Median marker meeting the IRC 79:2019 guidelines</td> <td>5</td> </tr> <tr> <td colspan="2">Conspicuous (providing good visibility)</td> <td>5</td> </tr> <tr> <td colspan="2">Median marker provided on the median at 5 - 10 m spacing</td> <td>4</td> </tr> <tr> <td colspan="2">Median marker partially meeting the IRC guidelines</td> <td>4</td> </tr> <tr> <td colspan="2">Partly Conspicuous</td> <td>4</td> </tr> <tr> <td colspan="2">Median markers provided at 10 - 15 m spacing</td> <td>3</td> </tr> <tr> <td colspan="2">Not Conspicuous</td> <td>3</td> </tr> <tr> <td colspan="2">Median markers provided at 15 - 20 m spacing</td> <td>2</td> </tr> <tr> <td colspan="2">Median markers provided >20m</td> <td>1</td> </tr> <tr> <td colspan="2">Not Conspicuous and covered with dust.</td> <td>1</td> </tr> </tbody> </table>				Rating Parameters (Drop down menu)		Rating	Median marker provided on the medians at equal to or less than 5 m spacing		5	Median marker meeting the IRC 79:2019 guidelines		5	Conspicuous (providing good visibility)		5	Median marker provided on the median at 5 - 10 m spacing		4	Median marker partially meeting the IRC guidelines		4	Partly Conspicuous		4	Median markers provided at 10 - 15 m spacing		3	Not Conspicuous		3	Median markers provided at 15 - 20 m spacing		2	Median markers provided >20m		1	Not Conspicuous and covered with dust.		1
Rating Parameters (Drop down menu)		Rating																																							
Median marker provided on the medians at equal to or less than 5 m spacing		5																																							
Median marker meeting the IRC 79:2019 guidelines		5																																							
Conspicuous (providing good visibility)		5																																							
Median marker provided on the median at 5 - 10 m spacing		4																																							
Median marker partially meeting the IRC guidelines		4																																							
Partly Conspicuous		4																																							
Median markers provided at 10 - 15 m spacing		3																																							
Not Conspicuous		3																																							
Median markers provided at 15 - 20 m spacing		2																																							
Median markers provided >20m		1																																							
Not Conspicuous and covered with dust.		1																																							

Cont.

II Questions on traffic characteristics, road geometry and road safety infrastructure on road.						
Sl.No.	Questions	Options				
		1	2	3	4	5
32 b	Delineator	Rating Parameters (Drop down menu)				Rating
		Delineator provided on the medians / Side roads / Curves at equal to or less than 5 m spacing				5
		Delineator meeting the IRC guidelines				5
		Conspicuous (providing good visibility)				5
		Delineator provided on the medians / Side roads / Curves at 5 - 10 m spacing				4
		Partly Conspicuous				4
		Delineator provided on the medians / Side roads / Curves at 10 - 15 m spacing				3
		Delineator partially meeting IRC guidelines				3
		Not Conspicuous				3
		Delineator provided on the medians / Side roads / Curves at 15 - 20 m spacing				2
		Delineator not meeting IRC guidelines				2
		Delineator provided on the medians / Side roads / Curves at greater than or equal to 20 m spacing				1
		Not Conspicuous and covered with dust.				1
33	Is Driver Feedback Sign provided at the mid-block section on the school zone.	Yes	No	Not Required		
		Note: Driver Feedback Sign (DFS) display real-time feedback about the speed of the vehicle on a LED display. DFS with its better visibility alerts motorists when they are over speeding and helps protect pedestrians and other vulnerable road users. It can be very effectively used on city roads near schools, hospitals and residential areas to warn speeding motorists to slow down.				
34	Is seating arrangement provided on the footpath or near the pick-up and drop-off zone outside the school gate.	Yes	No	Not Required		

Info about Crash Data

III Questions on Crash Data								
Sl.No.	Questions	Options						
1	Crash reported inside the school zone in last 3 years for school children only.	<=5	5 to 10	10 to 20	>20			
2	Number of fatal crashes	<=3	3 to 5	5 to 10	>10			
3	Number of major injuries	<=5	5 to 10	10 to 20	>20			
4	Number of minor injuries	<=5	5 to 10	10 to 20	>20			
5	Major Type of Collision	Head on	Rear End	Side Collision	Vehicle - Pedestrians	Vehicle - Bicycle		
6	Mode of travel involved in collision							
	Mode 1	Walk	Bicycle	Two-wheeler	Three-wheelers	Car / Taxi	Bus	Heavy Moving Vehicles
	Mode 2	Walk	Bicycle	Two-wheeler	Three-wheelers	Car / Taxi	Bus	Heavy Moving Vehicles

Info. About School Buses/drivers

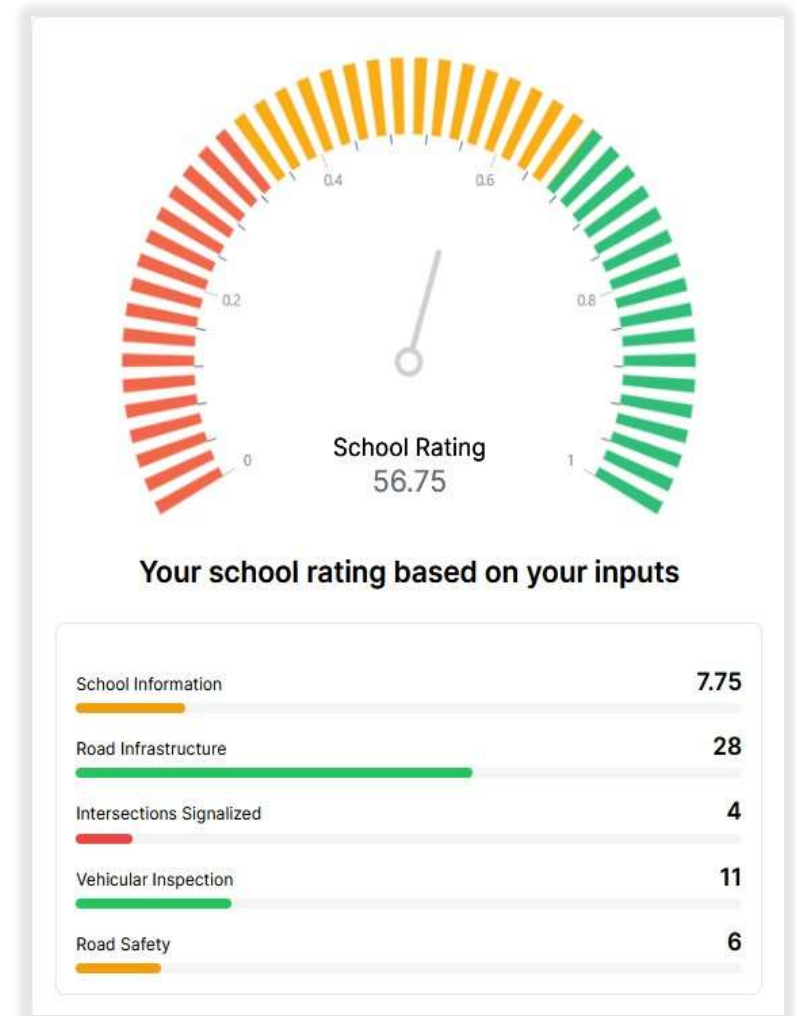
IV Vehicular Inspection and checklist for drivers			
Sl.No.	Questions	Options	
1	Does the school have permit for operating school buses?	Yes	No
2	Does school have all documents for bus driver and accompanying assistant?	Yes	No
3	Is the school management maintaining periodical check-ups for buses and drivers?	Yes	No
4	Are the school buses made conspicuous with retroreflective taping? Note: The front, rear and sides of the school buses shall have conspicuity tape.	Yes	No
5	Are school buses doors provided with stop sign (with retro reflective material)?	Yes	No
6	Are the school buses provided with speed governor and is it in functioning condition?	Yes	No
7	Do the bus drivers have valid driving license?	Yes	No
8	Do the drivers have possession of a safe driving record?	Yes	No
9	Do the school buses contain school number and emergency number on the back?	Yes	No
10	Do the school Buses contain first-Aid kit?	Yes	No
11	Does the school outsource bus or van for transportation?	Yes	No
12	Does the van owner/cab owner overload the children in the vehicle? Note: Are children standing inside the school bus / younger kids sitting on lap of elder children in school buses, vans, autorickshaws etc.	Yes	No
13	Do students use motorcycle/cycle to commute?	Yes	No
13 a	Whether the children carry license.	Yes	No
13 b	Does the motorcycle/cycle have sufficient conspicuity?	Yes	No
14	Does the students wear helmets while riding motorcycle/cycle?	Yes	No

Info about Road Safety Awareness

V Road Safety Awareness			
Sl.No.	Questions	Options	
1	Does the school promote Road safety?	Yes	No
2	Is the school having Road Safety Awareness Corners which highlights the traffic rules, road decorum, road signs and road marking?	Yes	No
3	Does school arrange visit for children to nearby Traffic Parks and focus on Do's and Don'ts of Road Safety?	Yes	No
4	Does school have a dedicated road safety training program?	Yes	No
5	Does the school have a dedicated trauma training program?	Yes	No
6	Does the school have Road Safety clubs?	Yes	No
7	Does the school promote road safety songs and films?	Yes	No
8	Does the school curriculum cover awareness to traffic rules and road safety?	Yes	No

School Rating and Ranking based on Score

- **Audit report** on Web Portal.
- **Objective Assessment:** The scoring system provides an objective evaluation of safety levels, enabling stakeholders to prioritize and address critical safety issues effectively.
- **Benchmarking and Improvement:** Schools can benchmark their safety scores against standards and work towards continuous improvement by addressing identified deficiencies.
- **Community Engagement:** Transparency in displaying scores and actions taken fosters community involvement, encouraging collaborative efforts to enhance road safety around schools.
- **Color coding** for easy identification Holds authorities accountable for infrastructure improvements



IRF IC has an ambitious target of auditing and ensuring the safety of all 15 lakh schools in the country by 2030

Capacity Building Online Course - Overview

10 modules:

- 8 theory,

- 1 on the SZS Portal,

- 1 field survey tutorial

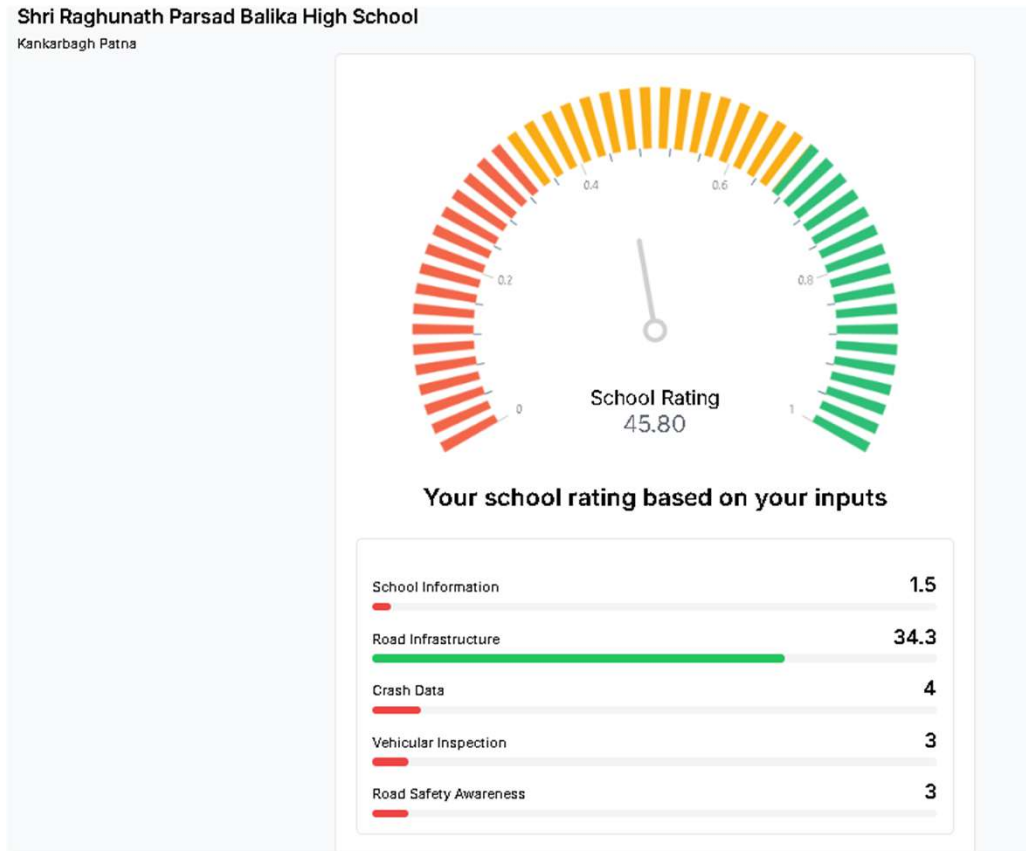
Topics include Road Safety Scenarios, Traffic Control Devices, Road Safety Engineering, etc.

Course fee: Rs. 10000 (Rs Ten Thousand only)

Pilot given by Ministry of Education

To conduct school zone safety audits in 50 schools across five States:

- Assam
- Bihar
- Karnataka
- Tamil Nadu
- Uttar Pradesh



Audit team Surveying and the score has been generated.

Visuals of Safe School Zone Program Pilot

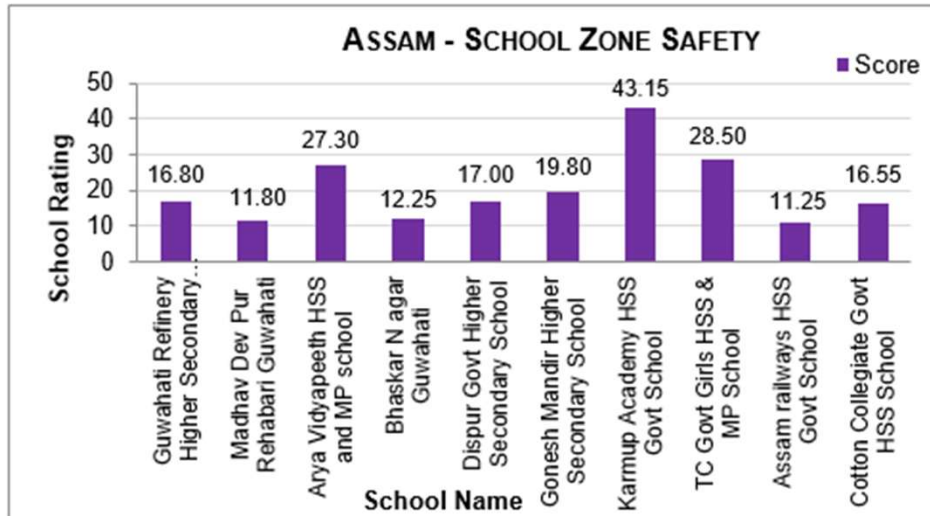


Support Requested from MoRTH

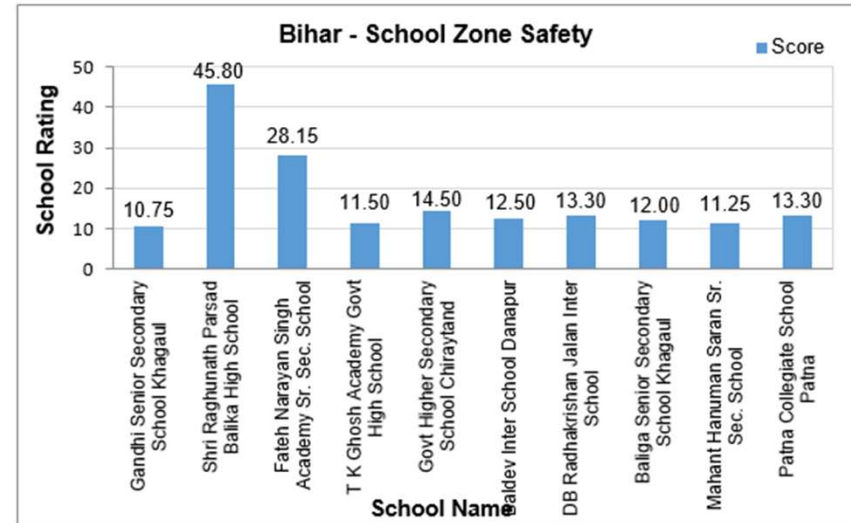
- **Ministry of Education has issued appropriate instructions to school authorities** in respective States to facilitate smooth audits by IRF-IC Auditors to complete the checklist as per IRC: SP-32.
- **Database of 1.5 lakh schools** across the State in Cities, Districts, and Villages for School Zone Road Safety Audit is given by MoE. Additionally we mapped higher secondary schools from Google.
- **Immediate target:** Require funding support from MoRTH to complete the School Zone Road Safety Audit of Higher Secondary Schools falling on National Highways (NH) by 31 Dec 2025.

Pilot Project Scorecard

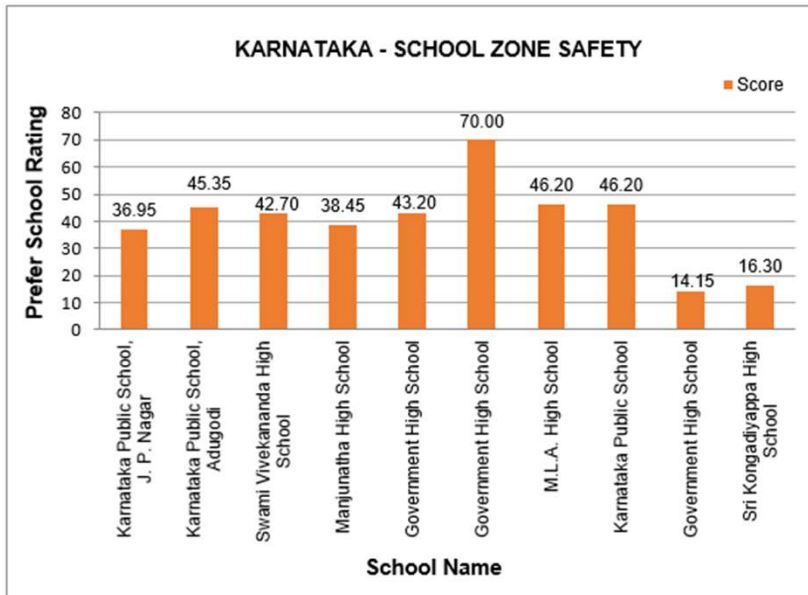
Assam



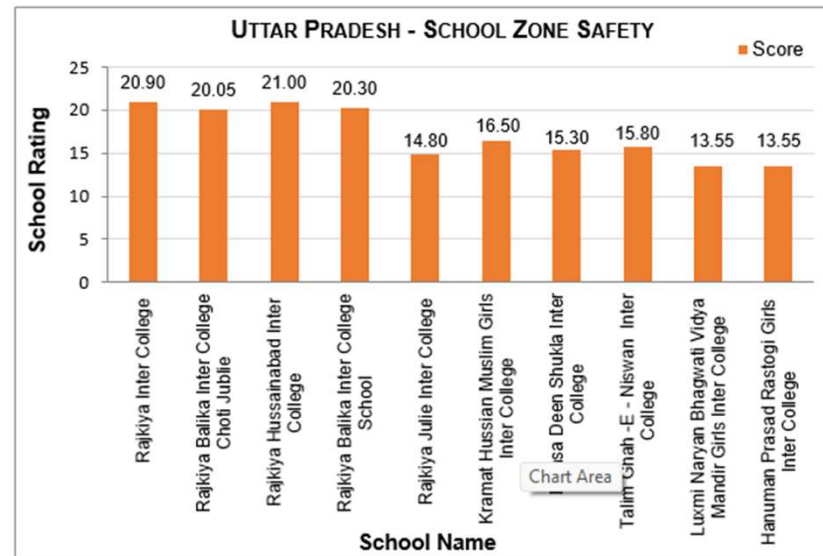
Bihar



Karnataka

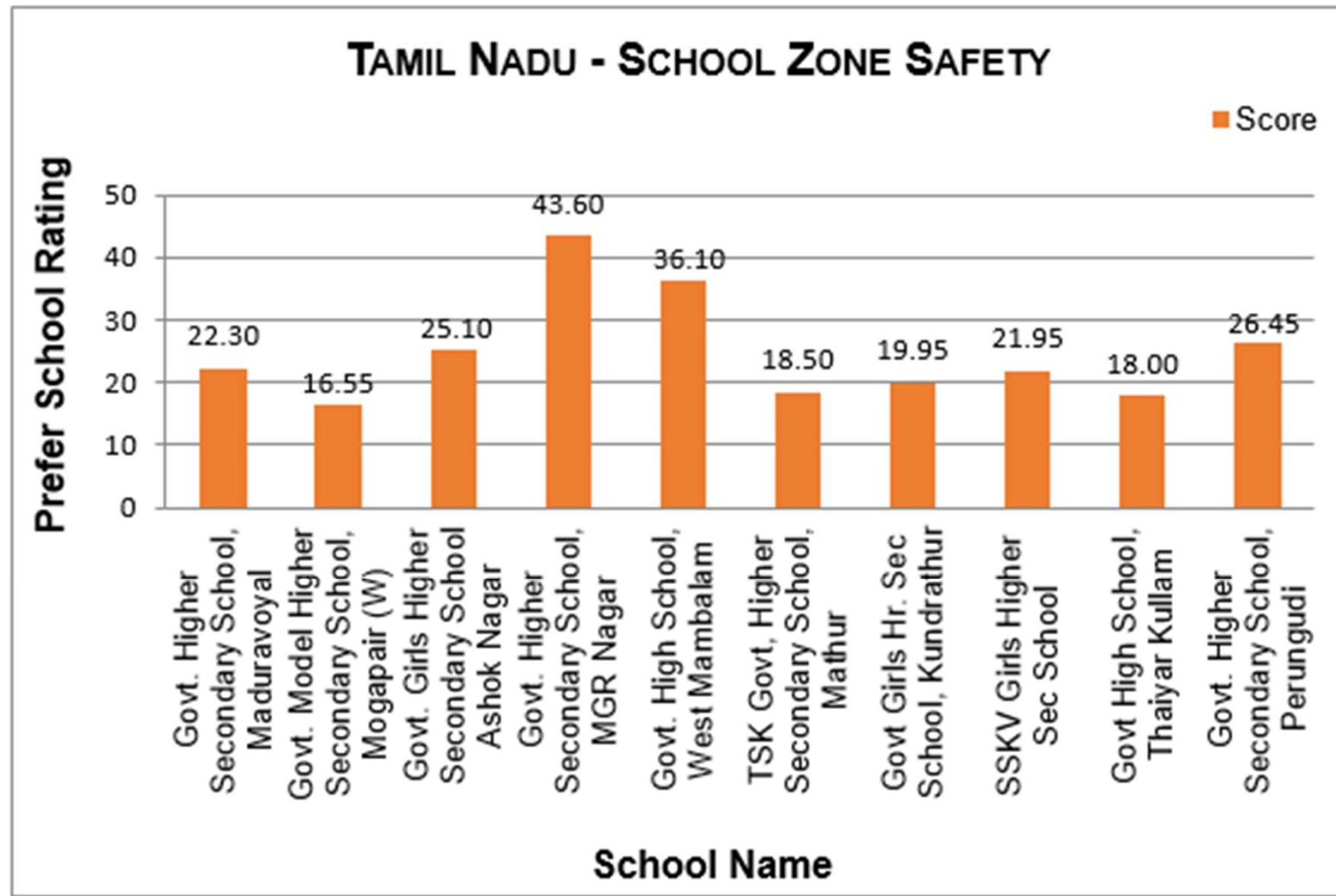


Uttar Pradesh



Pilot Project Scorecard

Tamil Nadu



Queries by the Ministry, Dated:

Para- I: On re-verification of data on 9.8% of accidents near schools

Source: NCRB Report 2022, Chapter 1A on Traffic Accidents (Table 1A 10, Page 179).

Insight: Road accidents near schools/educational institutions account for **7% of total fatalities** in 2022.

Action Point:

This data underscores the critical need for **School Zone Safety Audits** to mitigate risks and enhance safety around educational institutions.

Total Audits: 56 School Zone Safety Audits completed.

Coverage:

Para – II: Report on 40 Completed Audits

Pilot Project (Ministry of Education):

50 Schools in Assam, Bihar, Uttar Pradesh, Tamil Nadu, and Karnataka.

6 Schools in Delhi/NCR.

Road Types Assessed: National Highways (NH), local roads, and collector roads.

Queries by the Ministry

Para – III: Details of Schools for Upcoming Audits

Key Points:

Background:

Ministry of Education provided a list of 1,50,000 schools on various road types: NHs, SHs, arterial, sub-arterial, collector, and local roads.

Current Analysis:

Exact count of schools on/near NHs is unavailable.
Rough estimate: ~1,000 schools are on or close to National Highways.

Request:

Allocate **1,000 schools** on/near NHs for **School Zone Safety Audits**.

Commitment:

Complete audits for **5,000 schools** by **30 September 2025**.

Submit detailed reports and actionable recommendations.

Queries by the Ministry

Para- IV: Financial Proposal

Audit Cost: ₹ 20,000/- per school

Inclusions:

- Travel expenses
- Audit and safety assessments
- Data compilation and analysis
- Recommendations for remedial measures
- Detailed report preparation

Next Steps:

Submission of a **detailed financial proposal** for review and approval depending on the allocated number of schools in the pilot program.

Implementation: Loreto Convent School

BEFORE

AFTER



Blue Bells International



BEFORE

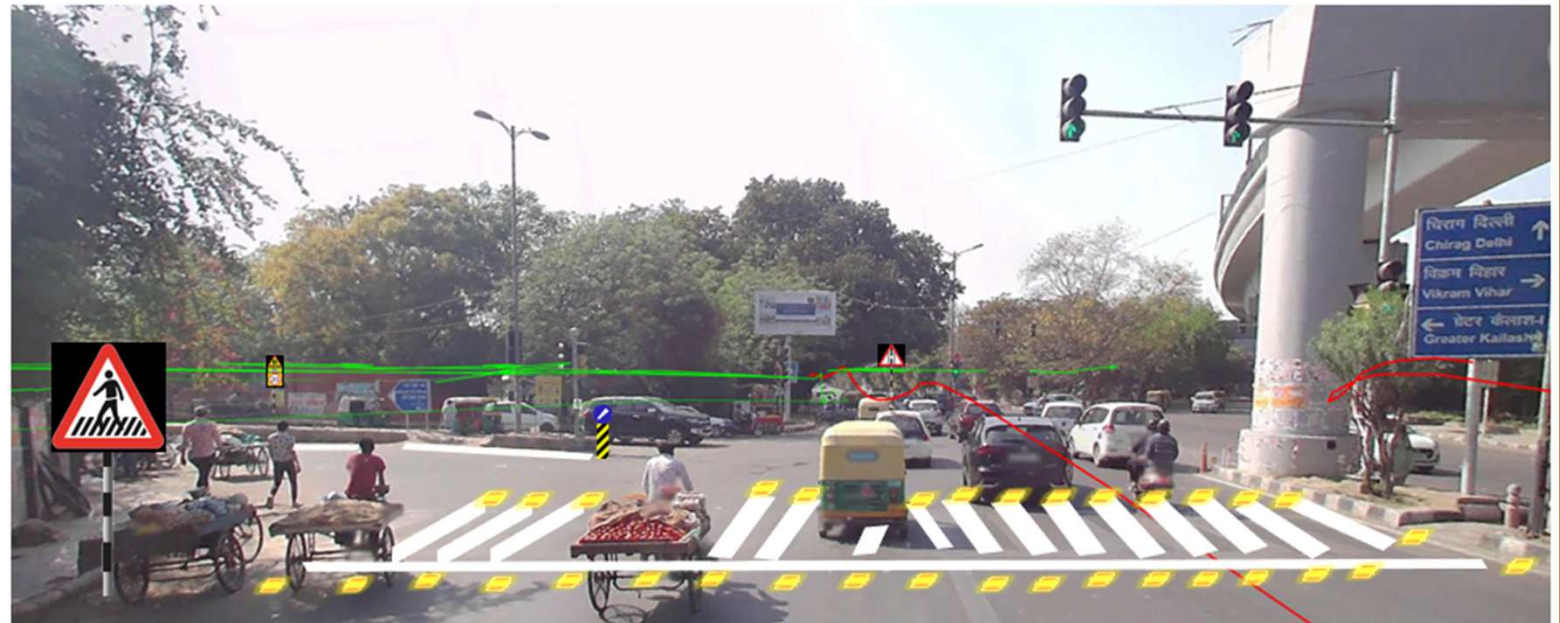
AFTER



Blue Bells International



BEFORE



AFTER

Proposed Schools within 1km Buffer of NH

Identified National Highway stretches are as under:

Total No of Schools: 855

1. Assam:

- Baihata Chariali to Simaluguri- NH15 (564KM)
- 218 Higher Secondary Schools Shortlisted

2. Tamil Nadu

- Hosur to Kanyakumari- NH 44 (610 KM)
- 180 higher Secondary Schools shortlisted

3. Uttar Pradesh

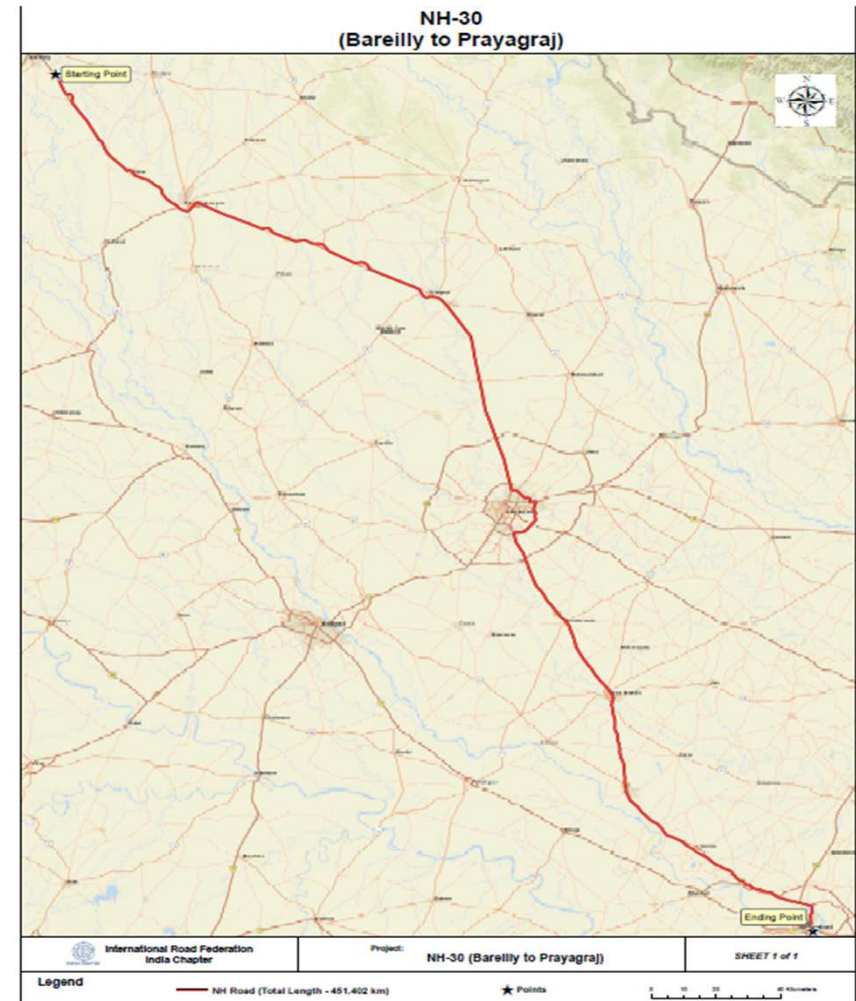
- Bareilly to Prayagraj- NH-30 (460KM)
- 127 higher Secondary Schools shortlisted

4. Haryana

- Bahadurgarh to Dabwali- NH 09 (300KM)
- 80 higher Secondary Schools shortlisted

5. Kerala

- Manjeshwar to Parassala NH 66 (640 KM)
- 250 higher Secondary Schools shortlisted



Identified schools within 1km buffer zone of the NH-30: Uttar Pradesh

1	IDs	Name	Address	District	Lat	Long
2	1	St. Anthony Convent School	FV54+3CV, Colnel Ganj, George Town, Prayagraj, Uttar Pradesh 211002, India	Prayagraj	25° 27' 27.885" N	81° 51' 21.752" E
3	2	Holy Trinity School, Allahabad	2, Church Lane, Church Lane, Prayagraj, Uttar Pradesh 211002, India	Prayagraj	25° 27' 43.568" N	81° 51' 41.334" E
4	3	The Mother'S Pride School	Stanley Rd, Mehdaori Gaon, Rasulabad, Teliarganj, Prayagraj, Uttar Pradesh 211002, India	Prayagraj	25° 29' 38.477" N	81° 51' 21.320" E
5	4	D. P. Public School, Prayagraj	13/2, Prayag Street, Master D.P. Road, Prayagraj, Uttar Pradesh 211003, India	Prayagraj	25° 28' 15.997" N	81° 51' 28.948" E
6	5	Jagat Taran Golden Jubilee School	46/32B, Amar Nath Jha Marg, Darbhanga Colony, George Town, Prayagraj, Uttar Pradesh 211002, India	Prayagraj	25° 27' 15.134" N	81° 51' 31.857" E
7	6	Gurukul Montessori School	Gohri Road Allahabad Sector G, Shantipuram Phaphamau, Prayagraj - Pratapgarh Rd, Prayagraj, Uttar Pradesh 211013, India	Prayagraj	25° 31' 54.389" N	81° 51' 14.596" E
8	7	Army Public School, Old Cantt Prayagraj	FVR4+WVC, Barrister Mullah Colony, Old Cantt, Prayagraj, Uttar Pradesh 211002, India	Prayagraj	25° 29' 32.297" N	81° 51' 25.713" E
9	8	Patanjali Rishikul School	Patanjali Rishikul School, Shilakhana Rd, opposite Ganga Gate, MNNIT, Teliarganj, Prayagraj, Uttar Pradesh 211004, India	Prayagraj	25° 29' 33.760" N	81° 51' 37.917" E
10	9	Prayagraj Public School	GVG4+PMR, Shantipuram, Phaphamau, Prayagraj, Uttar Pradesh 211013, India	Prayagraj	25° 31' 36.671" N	81° 51' 24.144" E
11	10	Access International School, Malak Balau, Nawabganj, Prayagraj	Malak Balau, Atrampur Urf Nawabganj, Uttar Pradesh 229412, India	Prayagraj	25° 34' 16.284" N	81° 43' 26.080" E
12	11	Gurunanak Public School	HPGP+MPV, Nawabganj Bazar Rd, Saraismail Urf Khagalpur, Uttar Pradesh 229412, India	Prayagraj	25° 34' 36.622" N	81° 44' 12.551" E
13	12	Tmps International School	Mehrudih, Malak Harhar, Uttar Pradesh 211013, India	Prayagraj	25° 32' 33.783" N	81° 48' 55.028" E
14	13	Devprayag School & College	gaddopur, Phaphamau, Uttar Pradesh 211013, India	Prayagraj	25° 31' 50.344" N	81° 50' 17.654" E
15	14	Shiv Ganga Vidya Mandir Cbse English Medium Co-Ed School Of Prayagraj	Sector F, Shantipuram, Phaphamau, Korsand, Uttar Pradesh 211021, India	Prayagraj	25° 32' 2.974" N	81° 51' 6.514" E
16	15	Shri Mahaprabhu Public School	SHRI NARAYAN ASHRAM, Shivkuti, Teliarganj, Prayagraj, Uttar Pradesh 211004, India	Prayagraj	25° 29' 53.127" N	81° 52' 7.471" E
17	16	Mpvm Ganga Gurukulam	SP Gupta Rd, Phaphamau, Uttar Pradesh 211013, India	Prayagraj	25° 31' 35.076" N	81° 50' 46.639" E
18	17	Ameer Memorial Senior Secondary School	Noor Masjid Rd, Pandy Ka Purwa, Kunda, Uttar Pradesh 230204, India	Pratapgarh	25° 43' 7.955" N	81° 30' 37.760" E

Thanks

More information is available on our website

https://safeschoolzone.indiairf.com/login?_ga=2.250978374.1546999223.1708921719-465934007.1636612506